

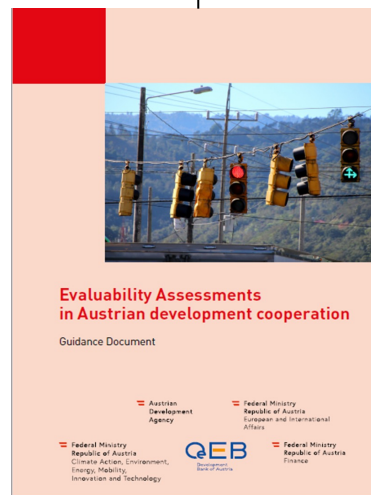


Guidance Document on Evaluability Assessments in Austrian development cooperation

Vienna Evaluation Network, 17. November 2022

Sigrid Breddy
Sigrid.Breddy@ada.gv.at

Tonka Eibs
Tonka.Eibs@ada.gv.at



Planned for 2023+:

Guidelines for
Country/ Regional
Portfolio
Evaluations/Reviews

Content

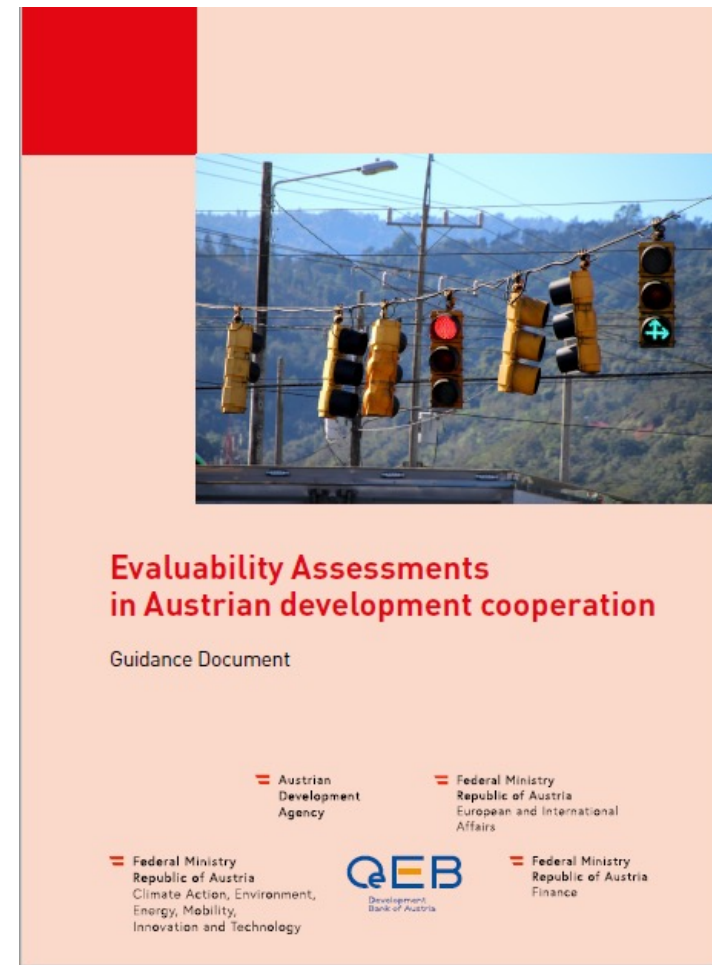
What are EA?

Why do we do EA?

When are they implemented?

How are they implemented?

What are potential **Challenges**?



What are EA?

Definition:

“Assessment of how far the object of an evaluation (a measure, project, programme, instrument, strategy or organisation) can be evaluated in a reliable and plausible way. It requires an ex-ante appraisal to ascertain whether the objectives set have been appropriately defined and the results achieved can be verified.”¹²

MFA (2019), Evaluation Policy of the Austrian Development Cooperation. Vienna

4 dimensions of evaluability

Types of EA

- Internal vs. External
- Field-based vs. Desk-based

Why do we do EA?

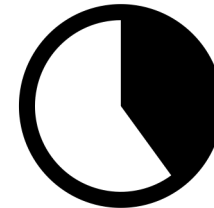
Support to subsequent
evaluation



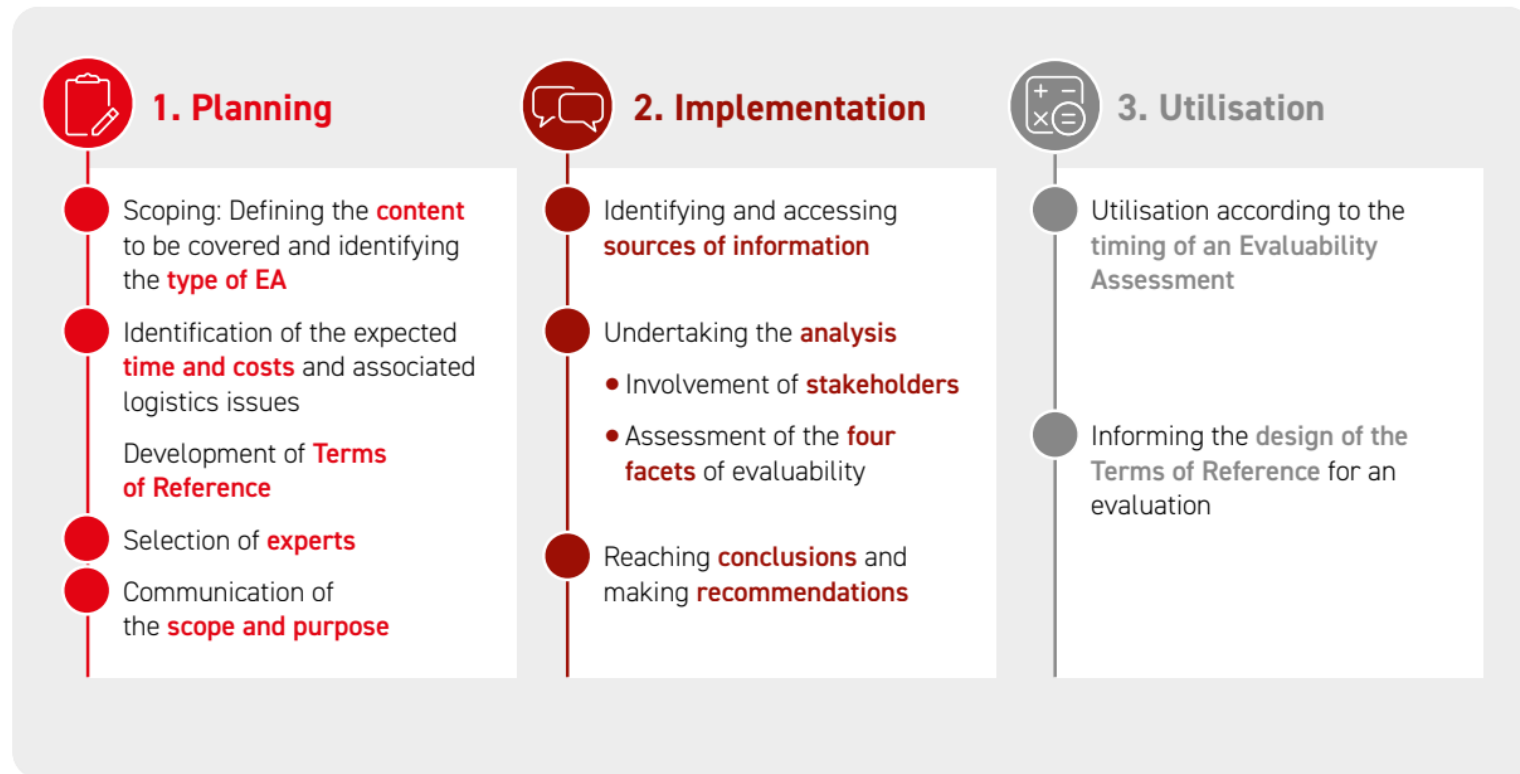
Support to **intervention** itself

When are they implemented?

- During the **design** phase
- After project **approval**
- **Before** an evaluation
- As a **first step** of an evaluation



How are they implemented?



Checklists 1 & 2

1. Design

1. Clear?	1.1. Are the long-term impact and outcomes of the intervention clearly identified, and are the proposed steps towards achieving these clearly defined?	
2. Relevant?	2.1. Does the Theory of Change make verifiable/testable claims regarding relevance to specific target groups, alignment with country context and partners priorities?	
3. Diligent?	3.1. How well have risks and mitigation strategies and key assumptions been specified? 3.2. Have assumptions about the roles of other outside actors (e.g. government or partners) been made explicit?	
4. Plausible?	4.1. Is there a continuous causal chain connecting the inputs provided by the intervention with the final impact of concern? 4.2. Is it likely that the project objective could be achieved, given the planned interventions, within the project lifespan? Is there evidence from elsewhere that it could be achieved? and impact (levels), i.e. will it capture what is expected to happen?	
5. SMART ⁴⁰ and reliable indicators?	5.1. Are there indicators and impact hypotheses? 5.2. Are the observed outcomes measurable?	
6. Consistent?	6.1. Is there consistency between the intervention, the theory of change, the work plans, progress reports, etc./r	
7. Agreement?	7.1. To what extent are different stakeholders holding different views about the objectives and how they will be achieved?	
8. Complexity?	8.1. Are there expected to be multiple interactions between different project components (complicating attribution of causes and identification of effects)? How clearly defined are the expected interactions?	

Plausibility of causal chain?

2. Availability of Data

1. Is a complete set of documents available?	1.1. ...relative to what could have been expected? E.g. project proposal, progress reports, evaluations/impact studies, commissioned studies. 1.2. Have provisions been made for the management of privacy and confidentiality issues? 1.3. Which documents may not be available or accessible (e.g. because of confidentiality concerns)?	
2. Do baseline measures exist?	2.1. If baseline data is not yet available, are there specific plans for when baseline data would be collected and how feasible are they? 2.2. If baseline data exists in the form of survey data, is the raw data available, or just selected currently relevant items? Is the sampling process clear? Are the survey instruments available? 2.3. If baseline data is in the form of national or subnational statistics, how disaggregated is the data geographically and demographically? Are time-series data available for pre-project years?	
3. How will causation be identified?	3.1. What means have been proposed to assess causal claims? 3.2. Is there a comparison group, and are members contactable? 3.3. What steps have been taken to make the comparison group comparable to the intervention group and to minimise sources of bias? 3.4. How frequently have data been collected on the status of the comparison group? 3.5. In the case of collaboration of multiple actors, has it been made clear how a single actor's contribution can be identified? 3.6. Have plans been made for how to identify additionality?	
4. Is data being systematically collected for all the indicators?	4.1. Is data being collected for all the indicators with sufficient frequency? Are there significant missing data? Have plans been made for collecting missing data? 4.3. Are the data likely to be reliable?	
5. Is available data appropriately inclusive?	5.1. Is data available for all identified indicators?	
6. Is disaggregated data available?	6.1. What plans (e.g. design and how) and how? 6.2. Is gender-disaggregated data available?	
7. Are critical stakeholder groups identifiable?	7.1. Are the intended beneficiaries identifiable? 7.2. Is there a record of who and when?	
8. If evaluations have been carried out ...	8.1. Is the raw data available? 8.2. Is the sampling process clear? 8.3. Are the survey instruments available?	
9. Do existing M&E systems have the capacity to deliver?	9.1. Is an M&E system in place with defined and appropriate responsibilities, sources and periodicities? 9.2. Is the budget adequate? 9.3. Do existing staff and systems have the capacity to provide data?	

Data systematically collected for all indicators?

Checklists 3 & 4

3. Stakeholder demands

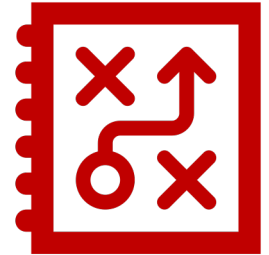
Who wants an evaluation and why?

4. Context

Security risks in reaching informant groups?

What are potential **Challenges?**

Confusion about purpose



Evaluation overload



Additional costs



**Thank you for your attention.
Any questions?**